

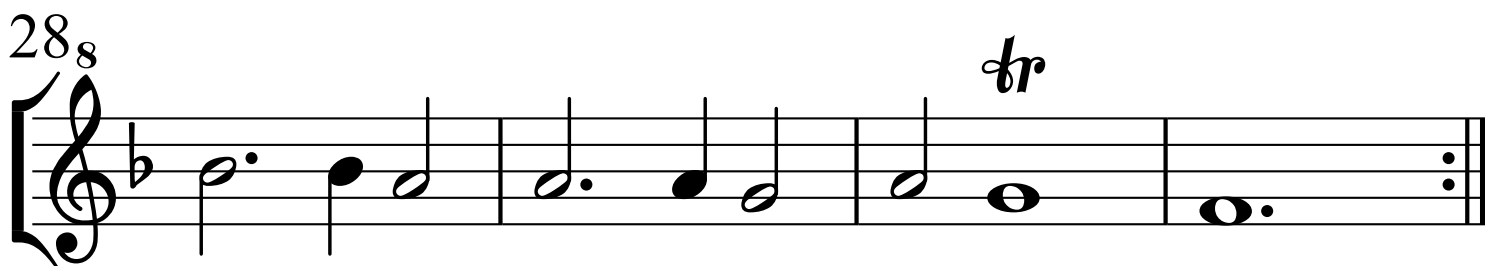
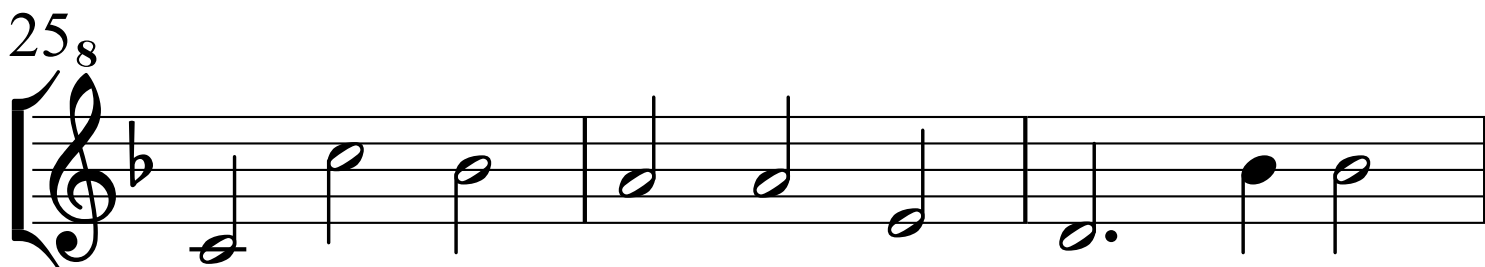
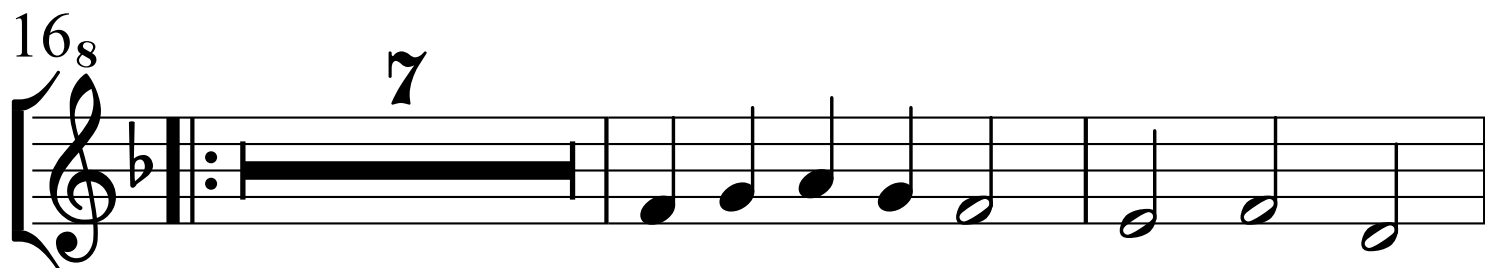
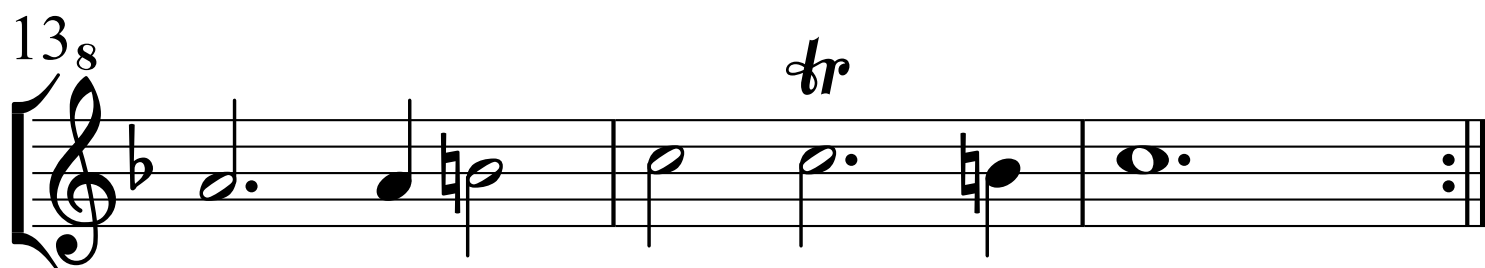
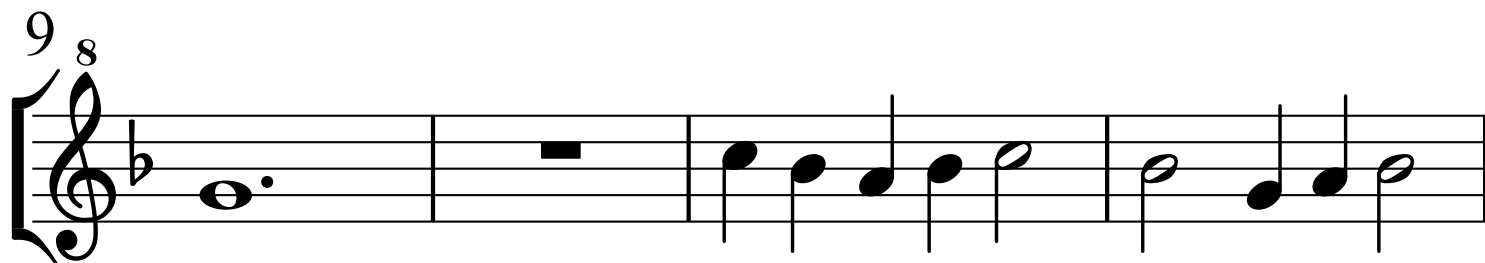
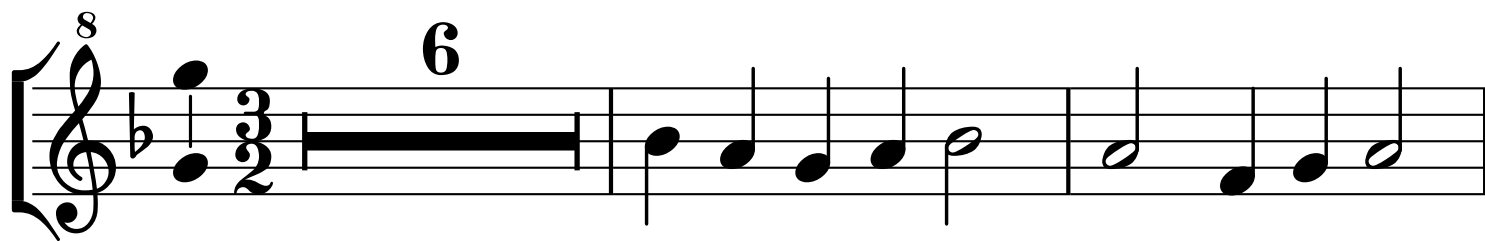
INTRADA 12 à5

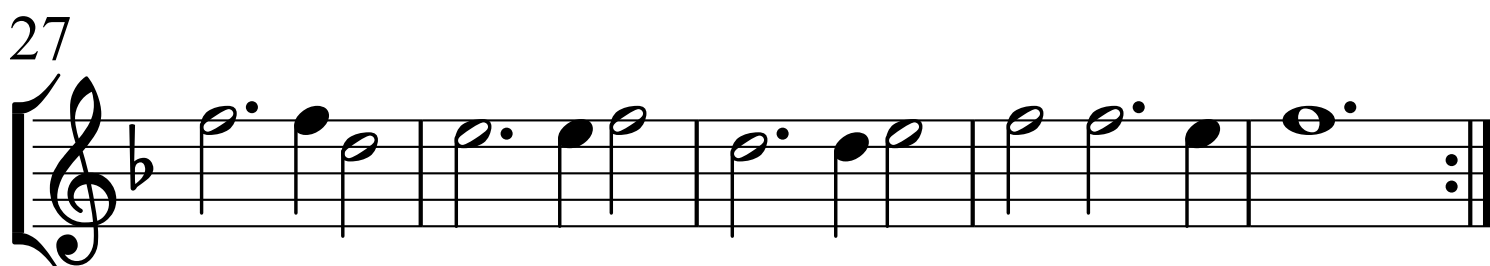
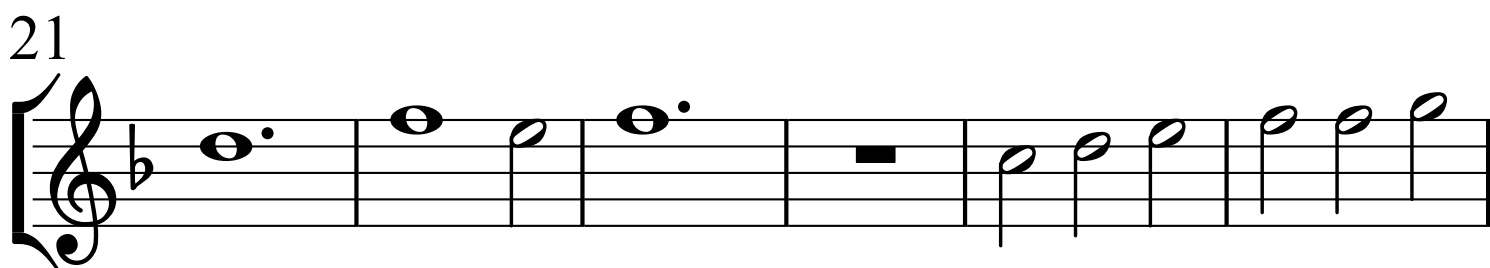
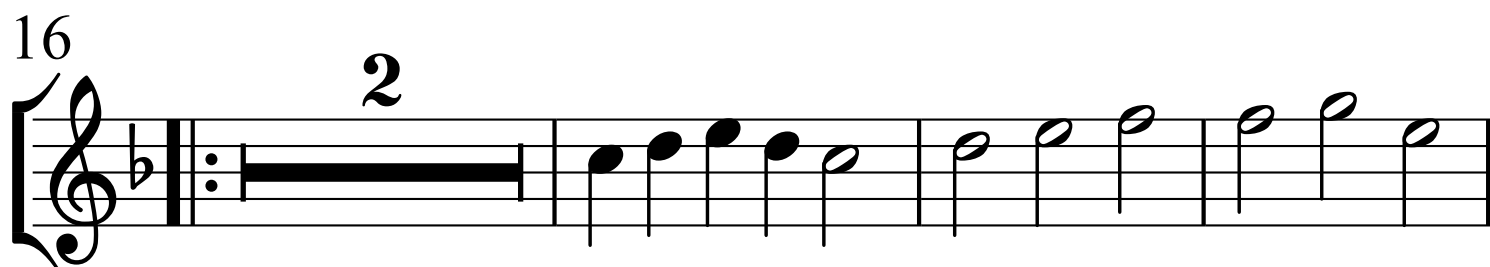
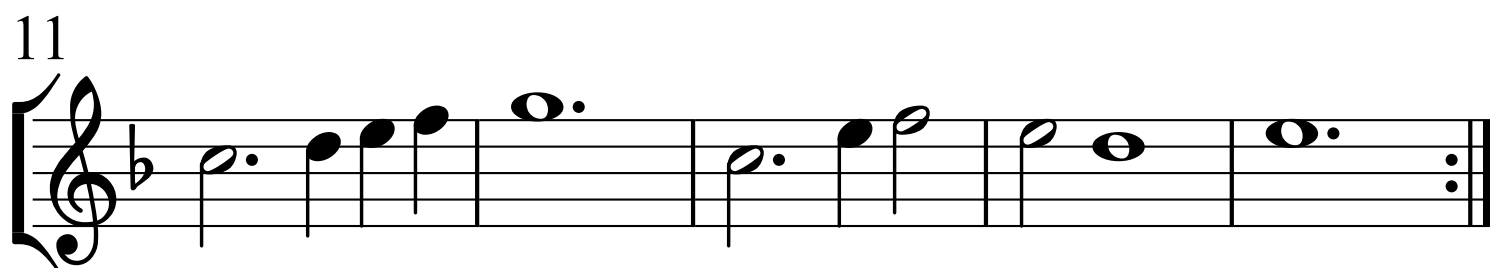
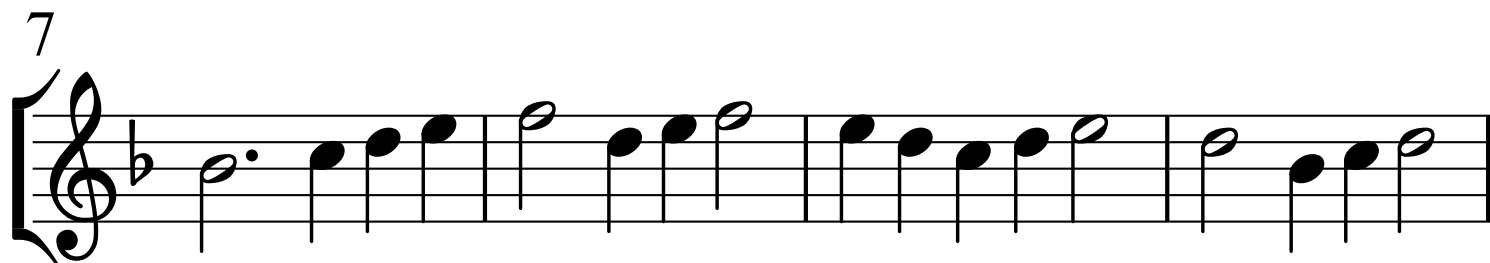
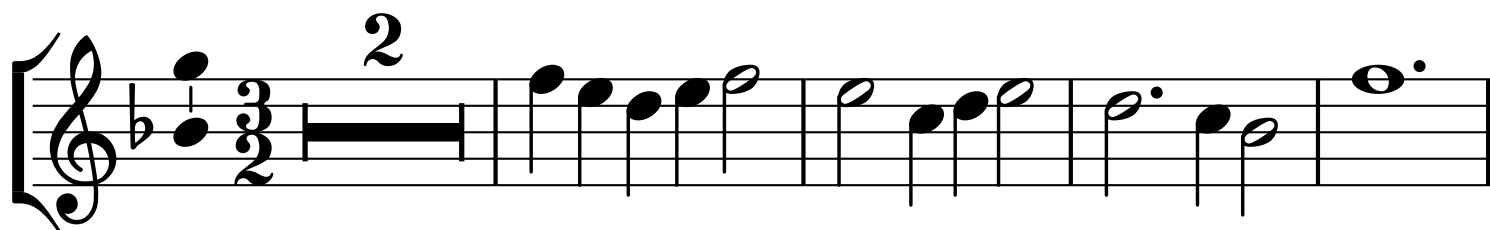
Johann Pezel
(1639-1694)

Measures 1-9 of the piece. The score is written for five staves in 3/2 time, with a key signature of one flat (B-flat). The first staff has a measure rest for the first six measures, followed by a melodic line. The other staves contain various rhythmic patterns, including eighth and sixteenth notes, and rests. A fermata is placed over the final measure of the first staff.

Measures 10-20 of the piece. The score continues with five staves. A trill (tr) is marked above the first measure of the first staff. The music features complex rhythmic patterns, including sixteenth and thirty-second notes, and rests. A double bar line with repeat dots is used to indicate a section repeat.

Measures 21-30 of the piece. The score continues with five staves. A trill (tr) is marked above the first measure of the first staff. The music features complex rhythmic patterns, including sixteenth and thirty-second notes, and rests. A double bar line with repeat dots is used to indicate a section repeat.

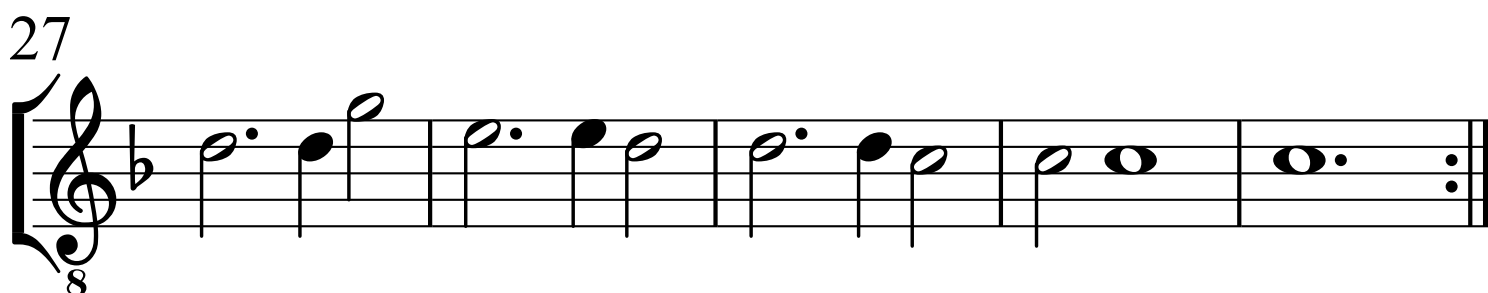
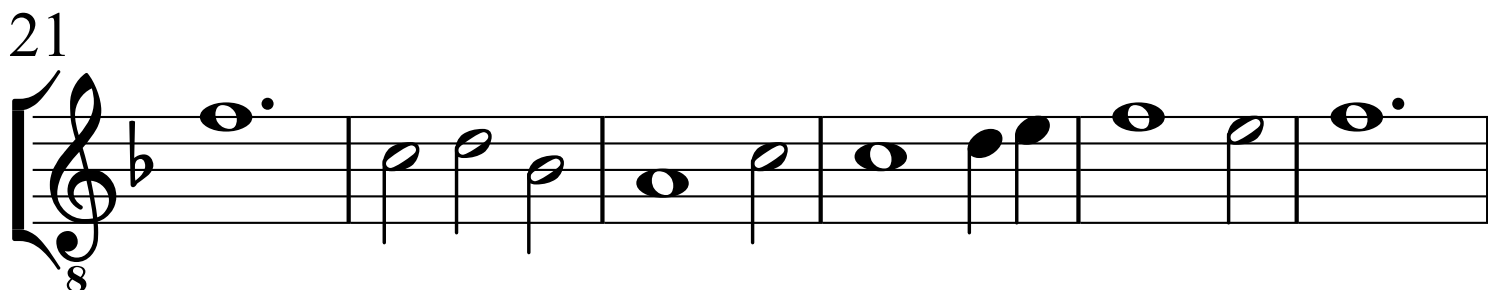
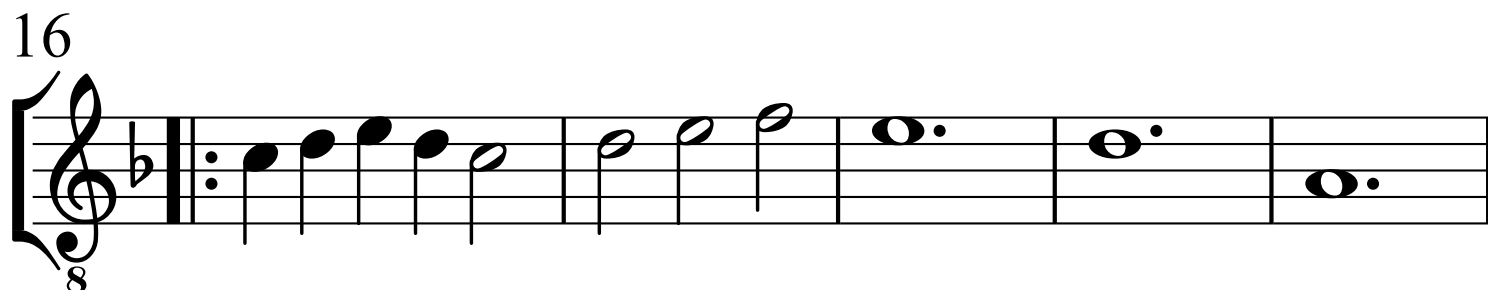




Tenor

Johann Pezel
(1639-1694)

INTRADA 12 à5



Basso


INTRADA 12 à5

Johann Pezel (1639-1694)

11



16



5

[illegible][illegible]